



Day 1 Event and Delay Capture

SENTINEL

Sentinel is a fleet wide tracking, monitoring and alerting solution that can connect staff with the state of a vehicle at the click of a button - and in real time.

As well as real-time alerting, Sentinel highlights the impact of events on journeys and network performance and provides a unique insight into unit running and maintenance through a series of reports and dynamic visualisations.

SENTINEL CAPABILITIES



Industry application

- Reduce schedule 8 costs
- Identify and resolve subthreshold delays to 1 second
- Measure performance against latest industry metrics including Right-Time, On-Time, Passenger Time Loss (PTL)
- Precisely measure station dwells and delays including berth offsets, door movements and dispatch times



Data Capture

- Accurate, auditable and automated measurement and monitoring
- Better than GPS only systems by integrating multiple positional data sources providing total network coverage in tunnels, stations and network blackspots



SENTINEL BENEFITS

Performance

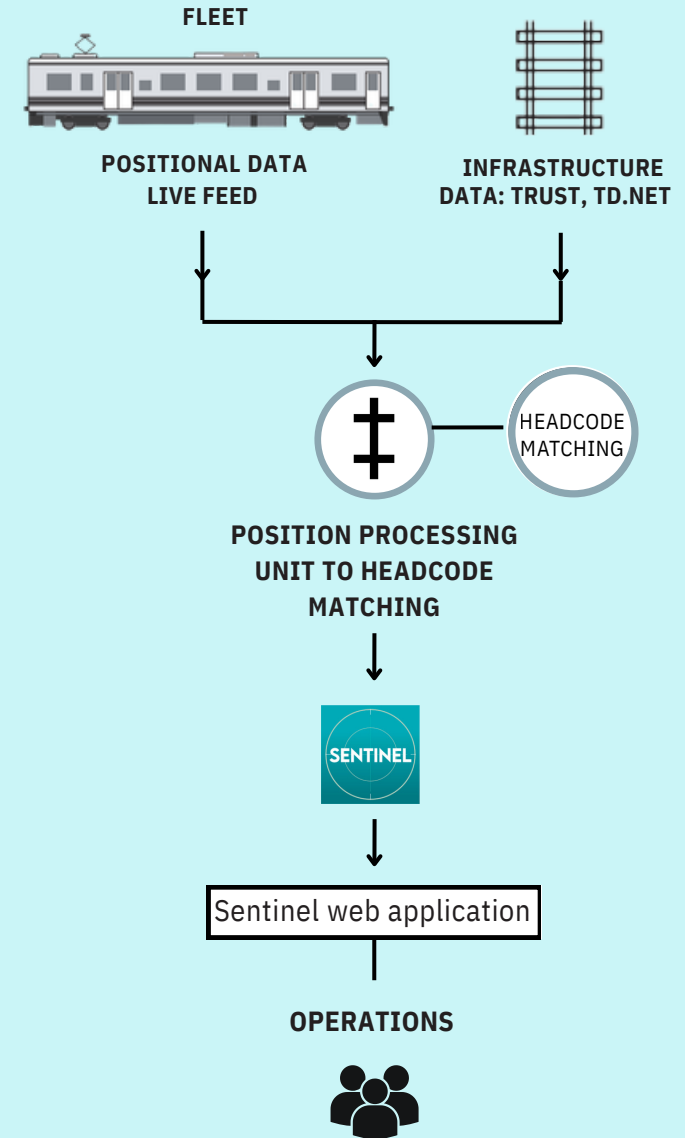
- Route cause analysis and attribution for subthreshold delays down to 1 second
- Resolve and attribute subthreshold delays on **day 1**
- Improve overall PPM

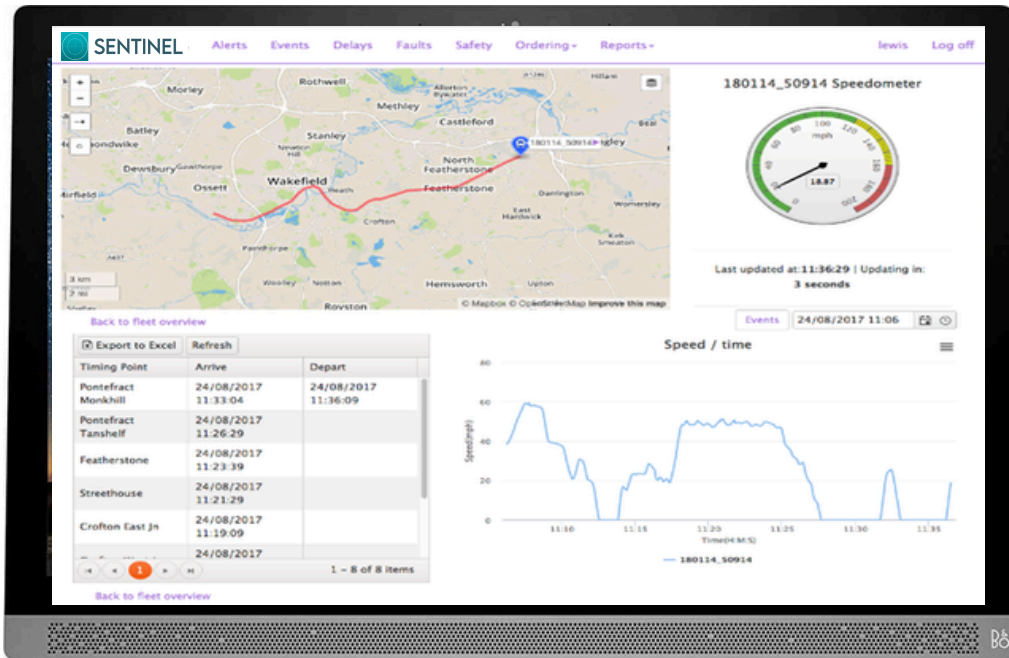


Fleet Monitoring

- Better than rail-data-only (TRUST, TD.net) systems as every position and every second tracked to giving total monitoring within berths and sections.

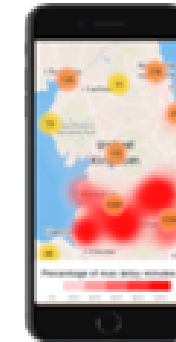
How Sentinel Works





SENTINEL DESKTOP

- Day 1 event and delay capture
- Centralised control
 - Monitor any fleet vehicle
 - Monitor on-board systems
- Reports and analysis
 - Targeted investigations
 - Delay attribution
 - Workflow analysis
 - PDF / Excel output
- Requirements
 - HTML 5 compatible web browser



SENTINEL MOBILE

- 2 way mobile to control work-flow
- Live information capture and sharing
- Fully integrated with Sentinal desktop application
- Requirements
 - ios / Android

SENTINEL in the Network



To arrange a demo and discover more about Sentinal, please contact:

Incremental Solutions

t: +44 (0)1904 217 316 | e: contact@incrementalsolutions.co.uk