



Overhead Line Equipment in Real-Time

OLErt

OLErt (Overhead Line Equipment in Real-Time) integrates visual measurement algorithms (from Oxford University academics) with Incremental's analytics platforms and precise positional certainty data, to prevent OLE incidents such as pan flips, contact force and out of tolerance stagger. By continually monitoring and evaluating train infrastructure in real-time (in this case, the Overhead Line Equipment), the system can alert users to issues as they occur and flag potential issues to enable timely preventative action.

OLErt CAPABILITIES



Monitors pantograph (including >100mph)

- Height
- Stagger
- Contact force between pantograph and contact wire
- Pantograph flip



Monitors other changes and influencing factors

- Arcing
- Vegetation
- Crossovers
- Hard spots

OLErt BENEFITS



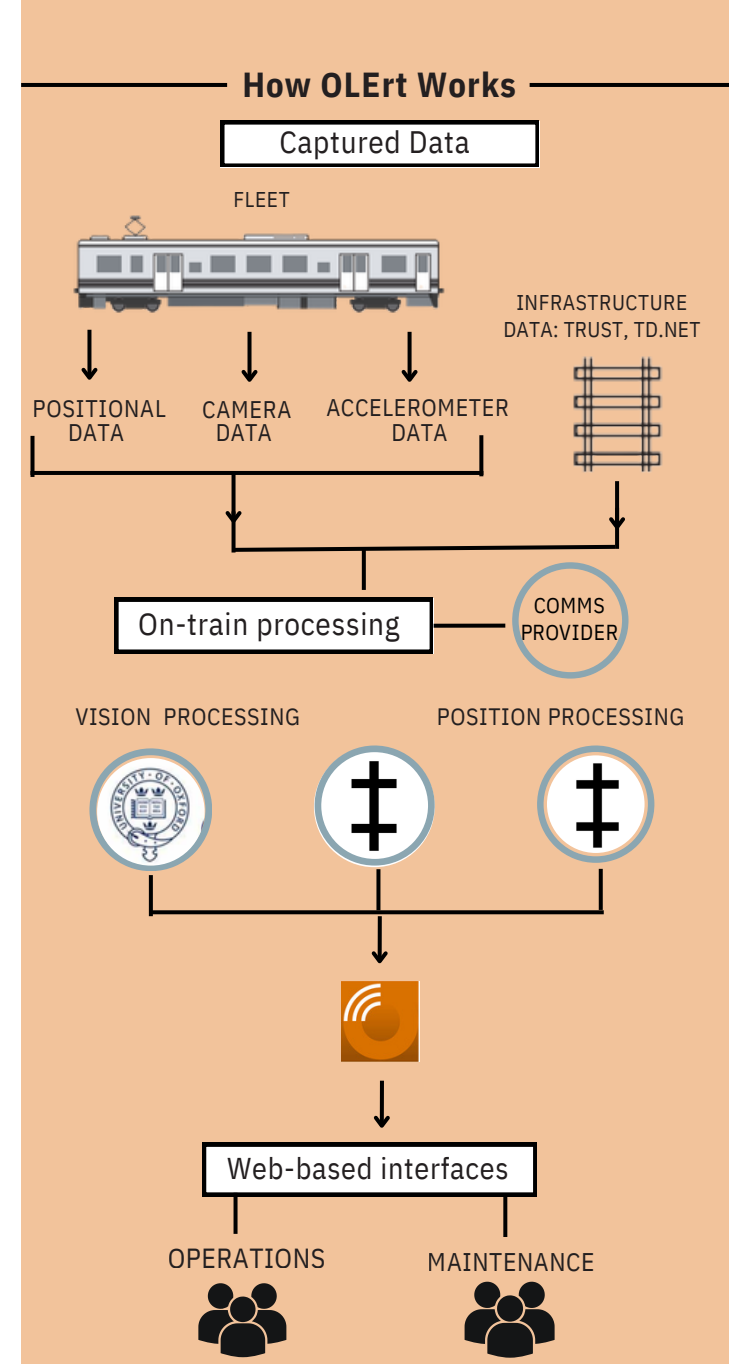
Digital solution

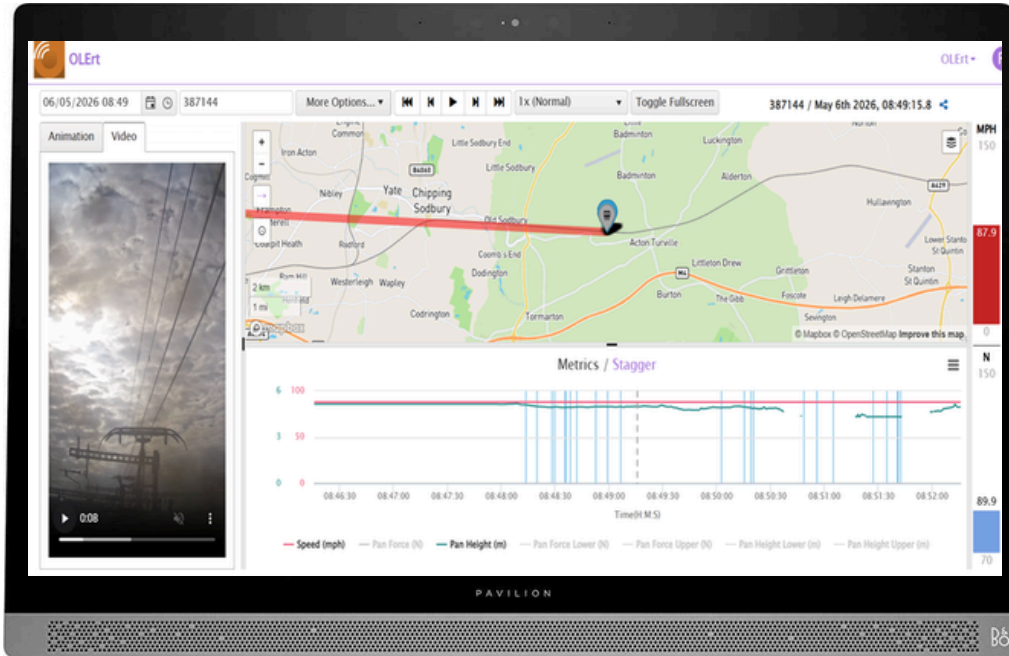
- On-board processing for real-time alerting
- GSM data streaming for instant issue identification
- Integration with third-party equipment



Fleet implications

- Monitor every train in service
- Safety improvements
- Continuous performance stability.





OLErt DESKTOP

- Real-time video analytics
 - Pantograph state
 - External anomalies
- Captured Data
 - Trend analysis
 - Video download
- Real-time GPS analytics
 - Train position
 - Train speed
- Requirements
 - HTML 5 compatible web browser
- Real-time alerts
 - Immediate action
 - Incident avoidance
 - Maintenance schedule

OLErt in the Network



To arrange a demo and discover more about OLErt, please contact:

Incremental Solutions

t: +44 (0)1904 217 316 | e: contact@incrementalsolutions.co.uk